

Our Professional Development Staff



Barbara Swicord is the President of the Summer Institute for the Gifted. Barbara received her Master's Degree in Gifted Education from the University of Georgia and is currently pursuing doctoral studies in Educational Administration at Rutgers University. Her 32 years in gifted education have taken her from working as an itinerant teacher for the gifted in Georgia, to Utah where she worked as a teacher of the gifted, Teacher Coordinator, and Curriculum Designer for Salt Lake City School District's G/T Program and finally to New Jersey, where she spent ten years as the Supervisor of Gifted Programs in the East Orange School District and was the Academic Director for SIG for seven years. Barbara served on the Governor's Commission for Gifted Education and has been the Instructional Mini-Grants Coordinator for NJAGC, where she has been past president twice and was a Trustee for many years. She was the founding President of NJAGC and was awarded the NJAGC Hall of Fame Award in 2000 and organized a student scholarship program for NJAGC which was named after her. Barbara now lives in Stamford, CT, where the SIG office is located.



As Academic Program Supervisor for the Summer Institute for the Gifted (SIG), **Susan Superson** designs all course curricula, facilitates training for Academic Deans and instructors, provides guidance for teachers and parents of gifted children, and presents workshops at local, state, and national gifted conferences. She has been with SIG for 9 years in various academic capacities. Susan is a 25-year teaching veteran who co-authored and implemented the gifted program in East Longmeadow, MA. Susan has served on several MA State Gifted Committees and MA State Grant Committees and has been a MA State Grant Award recipient. She holds a Master's Degree with Distinction in Special Education. Susan is a Disney Teacher Honoree, a Children's Empowerment Award winner, a two-time National Future City Engineering Coach Award winner, a National Space Day Coach Award winner, and a Honeywell Space Educator who has had astronaut training in Huntsville, Alabama. Susan is also a published poet and a nationally ranked Scrabble player.



SIG

Summer Institute for the Gifted®

For more information, please contact:

Susan Superson
Academic Program Supervisor
Summer Institute for the Gifted
River Plaza
9 West Broad Street
Stamford, CT 06902
203-399-5545
ssuperson@giftedstudy.com

2008 - 2009 Professional Services Brochure

Presented by the Summer Institute for the Gifted

Celebrating 25 years of commitment to enriching the academic and social experiences for gifted children.



SIG

Summer Institute for the Gifted®

Our Services:

Professional Development and Parent Workshops
Summer Programs throughout the United States
Saturday Programs in New Jersey and Connecticut
Evaluation of Gifted Programming

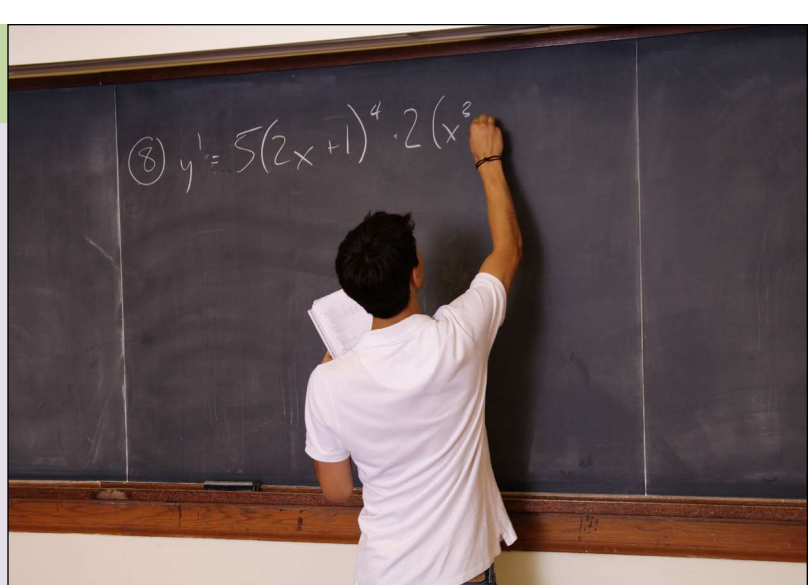


Introduction

The Summer Institute for the Gifted (SIG) has been a leading provider of gifted educational opportunities since 1984 and is recognized within the gifted and talented community for providing the highest quality programs available to meet the needs of academically advanced students.

With over 2,000 students participating in SIG programs each year, SIG is committed to supporting gifted and talented students, their families and teachers throughout the entire year.

The Summer Institute for the Gifted offers a multi-faceted array of services.



Our Evaluation Services

The evaluation of gifted and talented programs is crucial in ensuring their success. Whether mandated by the state, county, or district or suggested by teachers, administrators, or parents, outside evaluations provide critical information and suggestions for growth, change, and development.

SIG's experienced staff can evaluate individual school programs or district-wide approaches and address both specific areas and broad overviews. We pay particular attention to state and national standards in addition to program goals, financial and other resources, identification, responsiveness to stakeholders, curriculum and instruction methodology, and outcomes.



Our Workshops for Administrators, Teachers and Parents

SIG can provide ongoing training for teachers in curriculum development and instructional approaches, management of mixed ability classrooms, and integrating technology into gifted programs. SIG also works with parent groups and state gifted education associations to develop programs that address the social and emotional needs of the gifted child.

Half-day workshop: \$450 plus travel

Full-day workshop: \$825 plus travel

Problem-Based Learning: Help with Standards and Multiple Ability Levels

PBL is an instructional strategy that targets principles of gifted education. Based in concepts and big ideas, PBL allows for meaningful activities at all levels, and can be accomplished in any classroom.

Modifying the Classroom Curriculum for Gifted and Talented Students

Gifted and talented students have specific educational needs that are not always considered in a regular educational setting. This workshop will focus on ways that teachers can modify and differentiate their programs so as to provide an appropriate educational experience for capable students.

Empowering Gifted Students through Independent Study

Gifted and talented students should be engaged in independent research, study, and projects that enhance their complex thinking abilities as well as their interest in pursuing topics on an in-depth level. This workshop will walk participants through the steps of organizing independent studies for students. The strategies provided will be most readily used in grades 4-8, though strategies for younger students can be included upon request.

Developing Creative Thinking Abilities

All children are born with innate creative abilities. All students benefit from instructional strategies that help them regain these innate abilities. This workshop will share various teaching methods that can stimulate creativity in creatively gifted students, as well as all students, and help prepare them for the demands of competitive careers later in life.

Creative Problem Solving: Problem to Plan

Gifted and talented students have a natural ability to problem solve. This workshop will teach participants a 5-step problem solving process that can be used by students and teachers in all areas of curriculum as well as life. Students will use both sides of the brain as they diverge and converge to arrive at a plan of action that will creatively solve a given problem situation.

Our Summer Programs

SIG takes an individualized approach to gifted education by providing a wide range of challenging, traditional and non-traditional courses, outstanding social, cultural and recreational programs and a staff of remarkable educators and counselors. Most importantly, we create a supportive, structured and safe community that caters to the social and emotional needs of our gifted students.

Residential Programs (Grades 4-11)

Amherst College	July 19 - August 8
Bryn Mawr College	June 28 - July 18
Emory University	June 21 - July 11
Princeton University	July 26 - August 15
UC Berkeley	June 20 - July 10
	July 12 - August 1
UCLA	July 26 - August 15
UT Austin	July 12 - August 1
Vassar	June 20 - July 10
	July 13 - August 2

Day Programs (Grades K-6)

Bryn Mawr	June 29 - Jul 17
Fairfield University	July 20 - August 7
Manhattanville	June 29 - July 17
Moorestown	June 29 - July 17
Stuart Country Day School	July 20 - August 7
Out-of-Door Academy	June 15 - July 3
Hillbrook	July 13 - July 31
Druid Hills	June 22 - July 10
Harpeth Hall	June 22 - July 10



Our Saturday Programs (Grades 1-6)

Fairfield University January 24 - March 7

Identifying Giftedness for Instructional Adaptations

What is giftedness? How can school districts identify giftedness in their students in order to provide appropriate educational services? This workshop will engage participants in discussion about various identification concerns, such as defining giftedness in your population, current best practices and instruments, and problems of special groups, such as learning disabled gifted students.

Inventive Thinking for Gifted Students

Gifted students have many wonderful abilities but do not often get the opportunity to create new products to solve real life problems. This workshop will give teachers ideas about how to develop inventive thinking in their students, from idea starters to setting up invention competitions. Inventing is a great multi-disciplinary activity for students and teachers of all ages and can be integrated easily into any classroom.

Addressing the Social and Emotional Needs of the Gifted Child

The workshop will begin with an overview of the research into the field of social and emotional development. Some of the basic tenets of social and emotional development will be reviewed. Ways to increase interpersonal skills and ways to enhance the capacity for active listening will be among the topics presented.

The Nature of Giftedness: Meeting the Needs of the Gifted Learner

Academically advanced students have very particular characteristics and corresponding needs. This workshop outlines those features and gives teachers practical techniques for dealing with this unique population.

The Learning Disabled Gifted Learner: The Challenges of Dual Exceptionalities

A surprisingly large number of highly talented students also have various learning disabilities, including attention deficit and hyperactivity disorders. This workshop will help teachers and administrators to understand this challenging syndrome and to create policies, procedures, and approaches that will optimize these students' success.

Parenting for Creativity

Parents have a unique opportunity to develop many kinds of skills and talents in their children, not the least of which should be creativity. This workshop will help parents understand the crisis in the development of creativity in schools, will emphasize valuing creative thinking in your children at home and at school, and will show parents ways they can foster creative thinking at home and at school.

*SIG can create workshops
to meet your special needs.*