



Summer Institute for the Gifted®



SUMMER INSTITUTE FOR THE GIFTED SATURDAY PROGRAMS AT

THE MELROSE SCHOOL & THE STORM KING SCHOOL

A unique program for gifted and talented students grades 1 through 6!

ABOUT SIG SATURDAYS

The goal of the six-week SIG Saturday Program is to empower students in grades 1-6 to discover and develop their skills and talents by engaging in authentic activities and applied curriculum. Participants face intellectual challenges, create original products, and develop emerging life skills and talents, all while being a part of a vibrant learning community.

ABOUT SIG

The Summer Institute for the Gifted (SIG) has provided gifted and talented students with superior programming on some of the most prestigious campuses in the country since 1984. Within those 26 years, SIG has grown from a single session in New Jersey to ten residential programs and ten day programs in addition to the Saturday sessions. In 2009, we proudly served almost 2,000 academically gifted students ranging from Kindergarten to 11th grade.

SIG combines both traditional summer fun and challenging academic courses to provide a perfect atmosphere for learning, growing and accomplishing meaningful goals that will nurture and enhance each child's gift.

The Summer Institute for the Gifted is the program of the National Society for the Gifted and Talented (NSGT), a not-for-profit 501(c)(3) foundation created to honor and encourage gifted and talented children and youth.

OUR MISSION

The mission of the Summer Institute for the Gifted is to provide the highest quality educational and social opportunities for academically gifted and talented students through programs designed to meet their abilities and needs.

THE MELROSE SCHOOL Brewster, NY

Classes run 9am-12pm
Saturdays - January 23rd to March 6th

- Mid Session Break
- Snow Date - March 13th

THE STORM KING SCHOOL Cornwall On Hudson, NY

Classes run 9am-12pm
Saturdays - March 13 to April 24th

- Mid Session Break
- Snow Date - May 1st

JANUARY

Su	M	T	W	Th	F	Sa
					1	2
3	4	5	6	7	8	9
10	11	12	13	14	15	16
17	18	19	20	21	22	23
24	25	26	27	28	29	30
31						

FEBRUARY

Su	M	T	W	Th	F	Sa
	1	2	3	4	5	6
7	8	9	10	11	12	13
14	15	16	17	18	19	20
21	22	23	24	25	26	27
28						

MARCH

Su	M	T	W	Th	F	Sa
	1	2	3	4	5	6
7	8	9	10	11	12	13
14	15	16	17	18	19	20
21	22	23	24	25	26	27
28	29	30	31			

APRIL

Su	M	T	W	Th	F	Sa
				1	2	3
4	5	6	7	8	9	10
11	12	13	14	15	16	17
18	19	20	21	22	23	24
25	26	27	28	29	30	

PROGRAM OVERVIEW

The SIG Saturday Program gives students the chance to dive into exciting and challenging courses unlike any other. Students engage in stimulating activities and projects designed to develop and enhance such skills as communication, leadership, problem solving, and inventive thinking. Working both independently and in groups, students will improve social skills while enhancing their abilities through the course curriculum.

Each class is intended to challenge, while nurturing and expanding students' skill sets as well. Students are encouraged to work within their own specialty areas, resulting in a learning experience that is personalized and truly unique for each student. In the final portion of the SIG Saturday Program, students incorporate the skills and knowledge they have learned by building solutions to the projects introduced in the course and presenting them to their parents.

SIG ELIGIBILITY

The Summer Institute for the Gifted Saturday Program is open to students in grades 1-6 who have evidence of high academic ability and/or achievement.

Students who meet one of the following criteria are invited to apply:

- ✓ Students who have participated in Academic Talent Search Programs.
- ✓ Students who have scored at the 95th percentile or above in at least one of the major content areas or ability sections of a nationally-normed standardized test administered by their schools.
- ✓ Students who have scored in the gifted range on the PSAT, ACT, or SSATB.
- ✓ Students who have been identified as gifted and/or who have participated successfully in a local or school gifted program.

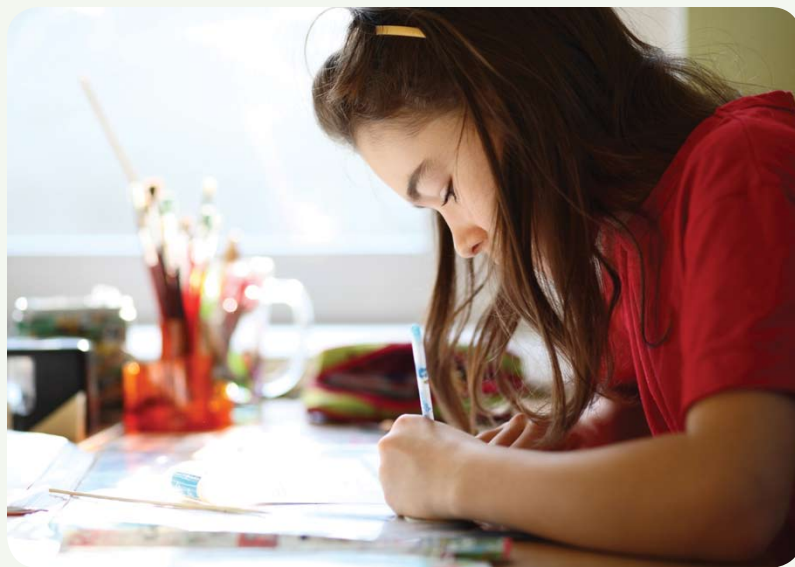
If no local or school gifted program exists, or if no test scores are available, two letter of recommendation forms can be submitted. One letter from a teacher and one letter from a school administrator who is familiar with the student's record and performance should be submitted. SIG Letter of Recommendation forms are available online at www.giftedstudy.org.



THE MELROSE SCHOOL

Brewster, NY

The Melrose School is an Episcopalian Day school founded in 1963 as an extension of St. Hilda's and St. Hugh's School in New York City. In 1993, Melrose became an independent school with its own board of trustees and set of by-laws. Their programs offer challenging curriculum built to motivate students from Pre-K through 8th grade, developing them into sought-after candidates for many prestigious private secondary schools in Northeast.



THE STORM KING SCHOOL

Cornwall On Hudson, NY

The Storm King School is a hidden treasure among boarding schools in New York State. With a history dating back to 1867, The Storm King School offers students the opportunity to grow both intellectually as well as socially. The school accepts students in grades 8 through 12, both boarding and day, and enrolls students from 14 states and 13 countries.

The Summer Institute for the Gifted Saturday Program faculty is comprised of dedicated professionals who provide the best possible academic experience for each SIG student. The instructional staff consists of individuals who are selected for their demonstrated abilities for working with curriculum and strategies appropriate for the academically talented student. Program assistants, who are advanced high school students, assist the instructors in the classroom.

8:45 - 9:00 am	Students are dropped off
9:00 am	Saturday Program Session Begins
10:30 am	Snack Break
12:00 pm	Dismissal and pickup of students

SATURDAY PROGRAM COURSES 2010

Budding Botanists - For students in grades 1 & 2



Come learn more about the fascinating world of plants! Everyone knows that plants can be used as food and decoration. But are you aware of the many ways plants can be used in your present and future life? Plants provide us with fibers for making cloth, rope, and paper. There are dyes obtained from plants used to color fabrics. Many plants have oil-rich seeds that are edible or the oil can be used as a lubricant, as fuel, in lighting, in paints and varnishes, as a wood preservative, and in waterproofing. In this class, students will become botanists as they investigate the nature, structure and life cycle of plants. Using what they already know about

plants, students will role-play as botanists, working to solve real-world problems, such as how to use plants as fuel for cars. This problem-based unit is designed to give students the opportunity to work with data, analyze information, and evaluate the results of experiments. The need to resolve a real problem engages students' interest and provides direction for the academic learning within the course. Students will model the scientific process in their search for the necessary information to find a solution, becoming involved in the aspects of the problem that are of the greatest interest to them.

Preservation Park - For students in grades 3 & 4



Students will become geologists and environmental scientists as they work together to create a park that will help to preserve a shoreline in environmental crisis! Students will role-play geologists as they investigate the role of soil in supporting and nourishing plants and the effects of soil erosion and weathering on the shoreline. As environmental scientists, students will explore pollution and the effect of waste and man-made disasters such as oil-spills on the shore. Students will consider the relationship between living creatures and

the environment as they work through this problem-based course, designing "Preservation Park". By the end of the course, students will evaluate how people impact the environment and the planet's natural resources, and be able to implement conservation practices in their homes, schools and communities. This course incorporates math and literary components with hands-on science experiments, enabling students to understand and apply the concepts of conservation to their lives.

Wonders of the World - For students in grades 5 & 6



There are not just Seven Wonders of the World any more! In this course, students will explore the modern wonders of the world and determine what constitutes a wonder. Students will begin by delving into the history of the Wonders of the World, investigating the Ancient and Medieval Wonders. After gaining an understanding of the historical significance of the Seven Wonders, students will role-play a committee of engineers and architects charged with designating the Seven Wonders of the 21st Century. Students will critically examine Modern Wonders

such as the Chunnel, Panama Canal, and the Golden Gate Bridge. By examining structures of architectural and engineering significance, students will determine criteria by which modern wonders can be judged, and suggest a new list of modern wonders. Students will hone their debating skills as they argue for national recognition of a modern wonder of their choice. As a capstone project, students will design their own legacy to the world, creating a wonder of their own.



SATURDAY PROGRAM FEE & REFUND POLICY

The total cost of the SIG Saturday Program is \$395.

Payment is due with your application. SIG accepts checks, money orders, Visa, MasterCard and American Express credit cards. Please make checks payable to the Summer Institute for the Gifted.

All requests for refunds must be made in writing to the SIG office in Stamford, CT. Refunds requested for program withdrawal will be considered on a pro-rated basis, depending on the time of withdrawal. For additional information please contact:

Angela Lycan – (203) 399-5545 or ALycan@giftedstudy.org

APPLICATION PROCESS AND DEADLINES

The Melrose School: January 13, 2010 / The Storm King School: March 3, 2010

Due to space limitations in these programs, we suggest that applicants submit their materials as soon as possible. Applications submitted after the deadlines above will be considered on a space available basis only. Admission is on a rolling, first-come, first-served basis according to the postmark date on the application form envelope.

Please Note: Re-grouping of grade levels or course cancellations may occur in the case of under-enrollment for a particular course. Parents would be notified in advance of such changes.

To apply to the Summer Institute for the Gifted Saturday Program, please complete and sign the application portion of the brochure, include the program fee of \$395, and mail to:

Summer Institute for the Gifted

Admissions Office-SP
River Plaza • 9 West Broad Street
Stamford, Connecticut 06902

SPEND YOUR SUMMER WITH SIG!

In addition to SIG Saturday Programs, SIG also offers Residential Programs for students who have completed grades 4-11 and Day Programs for students who have completed grades K-8. See below for more details on SIG programs or visit us at www.giftedstudy.org

Returning SIG students will receive substantial savings when they participate in another SIG program! Students that have attended a SIG Saturday Program are eligible for a \$150 discount off any Day Program and a \$250 discount for any Residential Program. SIG also offers additional savings including sibling and referral discounts. Visit www.giftedstudy.org/discounts for more information.



Day Programs Grades K-8 / Ages 5-14

The Summer Institute for the Gifted Day Program provides instruction in 36 courses during its regular academic schedule and engages students in recreational activities every day. Courses are taught at levels appropriate for academically gifted students who have completed Kindergarten through eighth grade (grades offered vary by site), covering humanities, mathematics, sciences, and multi-disciplinary courses. Day programs are held at ten different locations including:

- Fairfield University (Fairfield, CT)
- Manhattanville College (Purchase, NY)
- Moorestown Upper Elementary (Moorestown, NJ)
- Stuart Country Day School (Princeton, NJ)

Residential & Commuter Programs Grades 4-11 / Ages 10-17

A three-week summer program for gifted students held Monday through Friday, providing instruction in nearly 80 exciting and challenging multi-curricular, arts and recreational courses. On weekends, students participate in a variety of activities (off campus trips on Saturdays, Sunday Activity Day, Sunday Parent Visitation Day, and extended evening programs) that provide a change of pace and further enrichment for each academically talented student. Students can be a part of a SIG Residential Program in ten different locations including:

- **NEW!** Dartmouth College
- Princeton University
- Vassar College

SPACE IS LIMITED, APPLY NOW!
WWW.GIFTEDSTUDY.ORG • (866) 303 4744

